

SEAL:

**PRELIMINARY DRAWING**  
This drawing is for review purposes only. It is not for regulatory approval, permitting or construction.  
Landscape Architect: James Patterson  
TX License No. 775  
6/28/13

PROJECT:  
**LAMAR PARK  
DOLPHIN FOUNTAIN**

CLIENT:  
Houston, Texas

**HYDE PARK UNITED  
CIVIC ASSOCIATION**

PACKAGE: PRELIMINARY DESIGN	
NO.:	DATE:
DESCRIPTIONS:	

PROJECT NO.:	DESIGN BY:
0916	KD
ISSUE DATE:	DRAWN BY:
6/28/13	KD
SCALE:	REVIEWED BY:
1"=10'-0"	JP

SHEET TITLE  
**PRELIMINARY  
DESIGN**  
SHEET NUMBER

The Dolphin Fountain at Lamar Park has been a beloved neighborhood focal feature for years. It has fallen into disrepair and the Hyde Park United Civic Association intends to restore the fountain and surrounding park landscape.

**PROJECT SCOPE**

**Fountain**

- Refurbish tiered basin feature and dolphins
- Strip and resurface pool, patching as needed.
- Cut sump pit into floor and construct raised bottom to conceal new piping.
- Install new submersible pump in pool.
- Install new fountain equipment in in-ground vault-cartridge filter, chlorine erosion feeder, auto fill and water level sensor. Provide overflow drain line to COH sanitary manhole under Waugh Drive pavement. No backwash included.
- Add new underwater lighting to illuminate the central tiered basin.
- Replace all fountain piping and valves.

**Curb**

- Replace all curb and gutter

**Hardscape**

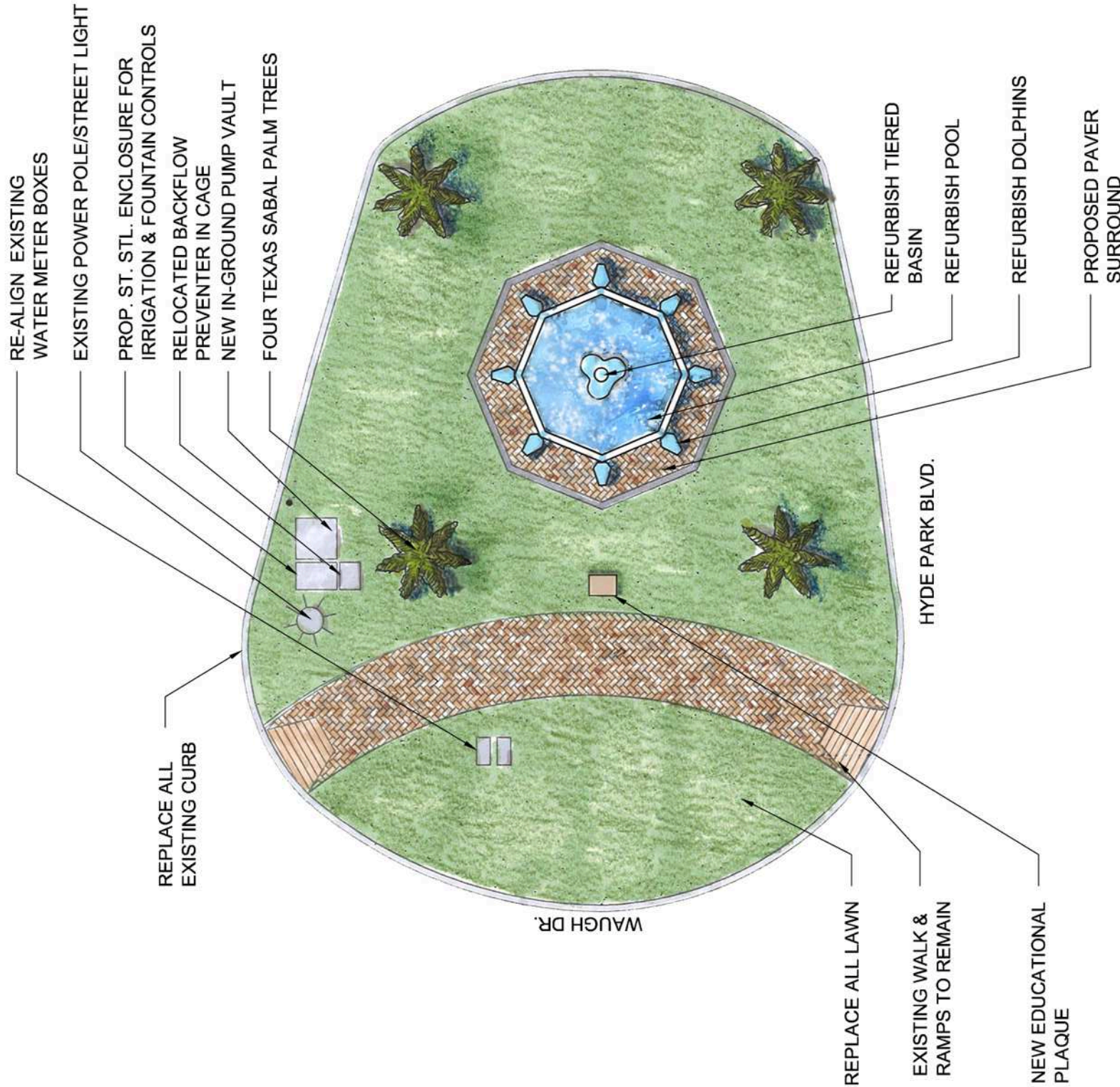
- Provide new paver walk around the fountain basin to accommodate splash control. Pavers shall match existing sidewalk and will include donor-regiment engraved pavers.
- New interpretive panel or plaque to be placed adjacent to the existing sidewalk telling the story of the Dolphin Fountain.

**Sod**

- Re-grade the entire site and replace sod.

**Planting & Irrigation**

- Replace existing crape myrtles with four Texas Sabal palms (8'-10' clear trunk ht.). The palms are native to the area, cold tolerant and low maintenance. They will enhance site visibility and are appropriate visual character for the historic era of the fountain and Hyde Park neighborhood.
- Replace irrigation system and controller
- Provide stainless steel, pedestal-mounted enclosure for irrigation controller and fountain and lighting controls.
- Relocate backflow preventer and enclose in vandal-resistant cage.
- Relocate electric meter onto new enclosure pedestal.



**PROPOSED PLAN**

